

COMPATIBLE MATERIALS WITH INDUC-STONE

Induc-Stone is compatible with a wide range of non-ferritic materials
Up to 20mm

Marble



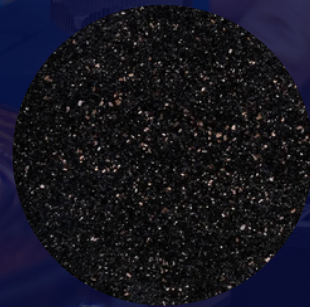
Wood



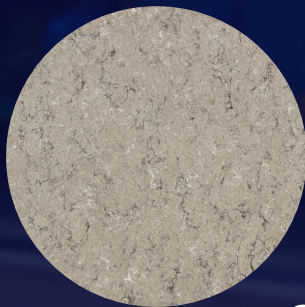
Quartz



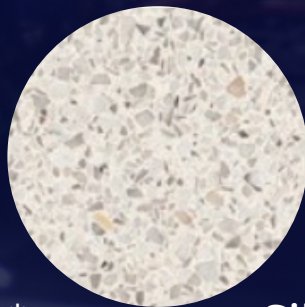
Granite



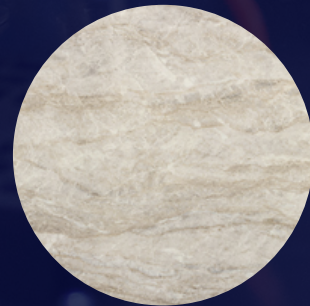
Belenco*



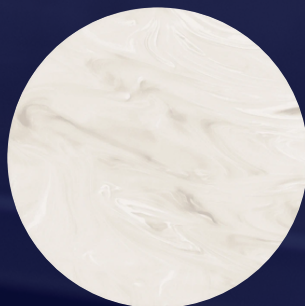
Caesar stone*



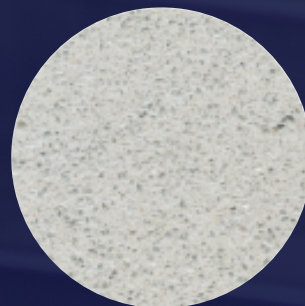
Dekton*



Corian*



Silestone*



If the material you would like to use is not yet on this list, we will be happy to test it for you. For additional information, please email us at : marketing@adventys.com

*Composite material: please check before each project with your stone manufacturer that the composite is NON FERRITIC